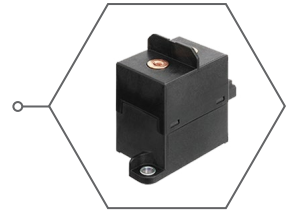


## New Product Introduction

# EV-A Series Automotive Relays (DC Contactors) High Voltage And High Capacity Relays With 500 V.DC Cut Off



Panasonic, a worldwide leader in Relay Products, introduces the **NEW EV-A Series Automotive Relay (DC Contactor)**.

The **NEW EV-A Series Automotive Relay** is a 250A @ 500V DC Contactor that has an incredibly small and lightweight design. The **NEW EV-A Series DC Contactor** can withstand up to an 8,000A short circuit current rating and has a high cut-off capability of 1,800A @ 500VDC without requiring any contact polarity. This Automotive Relay is suitable for usage in Electric Vehicles, DC Charging Stations and other high voltage DC applications such as Hybrid Construction Equipment.

## Features and Benefits

- Slim Size: 42.5 mm (W) x 56.5 mm(L) x 63.0 mm(H)
- Lightweight Design: Weighs Approximately 400 grams
- Robust Design For Dealing With High Current Surge
  - Can Withstand Up To 8,000A SCCR (Short Current Circuit Rating) At 5ms Maximum Capacity With No Smoke Or Ignition
- High Current Breaking Capability
  - Can Support Up To 1,800A @ 500 V.DC Cut-Off For At Least 1 Operation at  $L/R \leq 1$  ms Without Polarity
- Does Not Require Polarized Load Connection
  - The Output Load At The Contacts Can Be Connected Without Polarization Allowing For A High Freedom Of Design And No Risk Of Reversing The Connection
- RoHS/REACH Compliant

## Industries

- Electric Vehicles
- EV Charging Stations
- Industrial Machinery

## Applications

- Plug-In Hybrid / Electric Vehicle, Fuel Cell Vehicles
- High Voltage DC Charging Station
- Hybrid Construction Equipment
- Quick Charge Applications