

CR2477 LITHIUM MANGANESE DIOXIDE



Features & Benefits

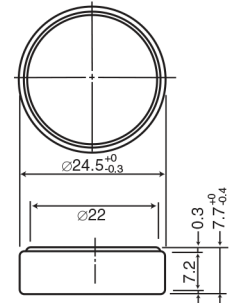
- Good pulse capability
- High discharge characteristics
- Stable voltage level during discharge
- Long-term reliability

Specifications

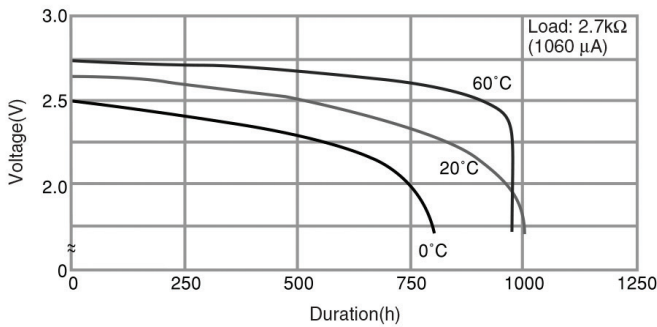
Nominal Capacity:	1000 mAh
Nominal Voltage:	3V
Weight:	10.5g
Operating Temperature:	-30°C - +85°C*

*Please consult Panasonic if expected temperature will exceed 70°C.

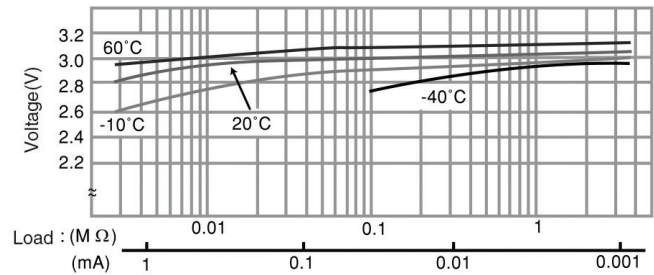
Dimensions



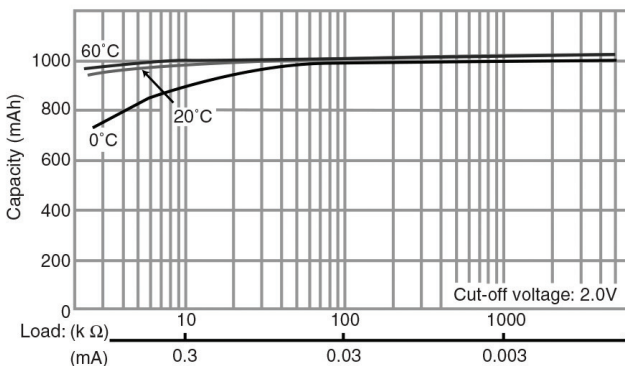
Temperature Characteristics



Operating Voltage vs. Load Resistance (voltage at 50% discharge depth)



Capacity vs. Load Resistance



⚠ WARNING

Serious harm in as little as 2-hours if swallowed. **KEEP AWAY FROM CHILDREN.** Seek immediate medical help if swallowed. Have the doctor call the poison center at 1-(800) 498 8666 for US and Canada. International: 303-389-1300

Product manufacturers should design their products to meet the safety requirements of Annex I of UL60065 or equivalent standards.

For more information on how Panasonic can assist you with your battery power solution needs call **877-726-2228**, visit www.na.industrial.panasonic.com/products/batteries or e-mail oembatteries@us.panasonic.com.

The data in this document is for descriptive purposes only and is not intended to make or imply any guarantee or warranty.