

CRV3 DISCONTINUED

Panasonic

# LITHIUM MANGANESE DIOXIDE



## Features & Benefits

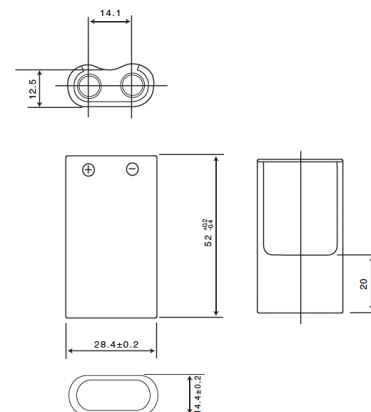
- Operating temperature range between  $-40^{\circ}\text{C}$  to  $+70^{\circ}\text{C}$
- High current pulse discharge capability
- Stable voltage level during discharge
- High safety and reliability

## Specifications

Nominal Capacity:	3000 mAh
Nominal Voltage:	3V
Weight:	Approximately 39g
Operating Temperature:	$-40^{\circ}\text{C}$ - $+70^{\circ}\text{C}$ *

\*Please consult Panasonic for use below and above  $-20^{\circ}\text{C}$  to  $+60^{\circ}\text{C}$

## Dimensions



## Discharge Characteristics

### Discharge Characteristics of CR-V3p(2pc) and "AA" Alkaline Cell (LR6, 4pcs)

