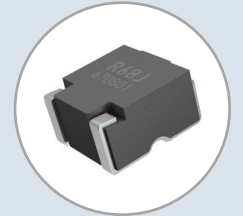


Line Extension

High Performance Type – ETQP*M***Y*** Power Inductors for Automotive Applications



Panasonic, a worldwide leader in Inductor Products, announces the expansion of the High-Performance Type – ETQP*M***Y*** Automotive Inductors.

These three new inductors expand the high performance automotive inductor lineup by filling key gaps in inductance, size, and current capability while maintaining the Series' high temperature, low loss, and high vibration performance.

These Inductors provide exceptional large current support, high heat resistance, and high vibration resistance. These surface mount Power Inductors are part of the industry's smallest class of SMT Inductors and meets the market demands for smaller automotive ECU's (Electronic Control Unit) enabling them to be directly mounted on engines while achieving excellent heat and vibration resistance.

The Panasonic High Performance Type Automotive Inductors are compact and highly reliable surface mount Inductors. They provide reliability of power circuits while contributing to the reduction of environmental impact by saving space in power circuit mounting areas.

Features and Benefits

- High Heat Resistance Operation up to 150°C Including Self-Heating
- High Vibration Resistance
- No Internal Joint – Direct Lead Terminal Joining Method
- Excellent Inductance Stability Over Broad Temperature Ranges
- Compact SMD, Ferrite Type Comparison Up to 40% Smaller
- Low DCR and High Reliability Due to Coil Lead Direct Output Structure
- Achieves High Heat Dissipation by an Integrated Structure with a Unique Low-loss Metallic Magnetic Material
- AEC-Q200 and RoHS Compliant

Industries

- Automotive
- Transportation
- Industrial

Applications

- DC/DC Converters for Various Automotive Applications: ABS, EPS, Fan, Pump, and More
- High-performance Automotive ECU Power Circuits